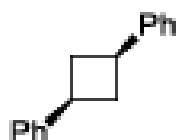
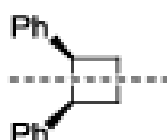


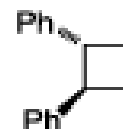
- (c) The *cis*-1,2-diphenyl compound is a *meso* compound as it is achiral by virtue of an internal mirror plane (S_1 axis) but has a stereoisomer that is chiral: the *trans*-1,2-diphenyl compound, which has a dissymmetric enantiomeric form. The *cis*-1,3-diphenyl cyclobutane contains no stereogenic centres.



no stereogenic elements
(achiral)



meso
(achiral)



dissymmetric enantiomer
 C_2 -symmetric
(chiral)

Meso is the term given to achiral members of a series of